

## HEAVY DUTY CATTLE/HORSE PANELS



CATTLE PANEL/ HORSE PANEL, HDG, 40X80X6 BULL BARS, 2 PINS INCLUDED

### Specifications

Height 1800mmx Length 2100mm

Vertical pipe: 50mm x 50mm RHS x 1.8 mm thick with fully welded caps

Horizontal rail: 40mmx 80mmx 2.00mm thick x 6 rails bull bars

Finish: HDG 15microns

Fully welded oval pipes, post & brackets

Two HDG Bolt pins with nuts

PACKING DONE ON STILLAGE

Quantity: 430 panels x 1x40ft HC

Reseller Price: please enquire (Melbourne, Sydney Brisbane)

Distributors wanted: please contact Bert: 0437 911 195

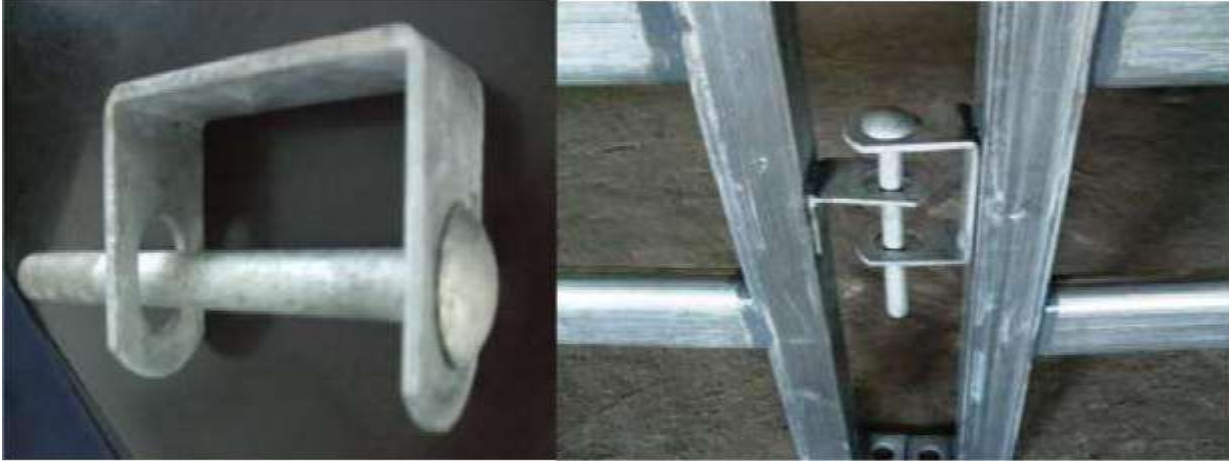
### Key points:

<b>N.B.S Cattle Panels</b>	<b>OTHERS</b>
Hdg :15microns	Hdg:6-7 microns
Welds : full welds on the lugs and joining horizontal oval pipes	Welds: tack welds on the lugs, 3/4 welds on the joining horizontal oval pipes
Pipe spec: 40x80mmx2.00mm	Varies
2 hdg bolt pins supplied with nuts	Varies
Distribution support /healthy margins	Varies

## Images of NB heavy duty cattle yard panels:

### A stronger option

**Bolt pins with nut**



**Full welds on the oval pipes**



**NB Heavy Duty Cattle Yard Panels (allwelds are epoxy painted)**

